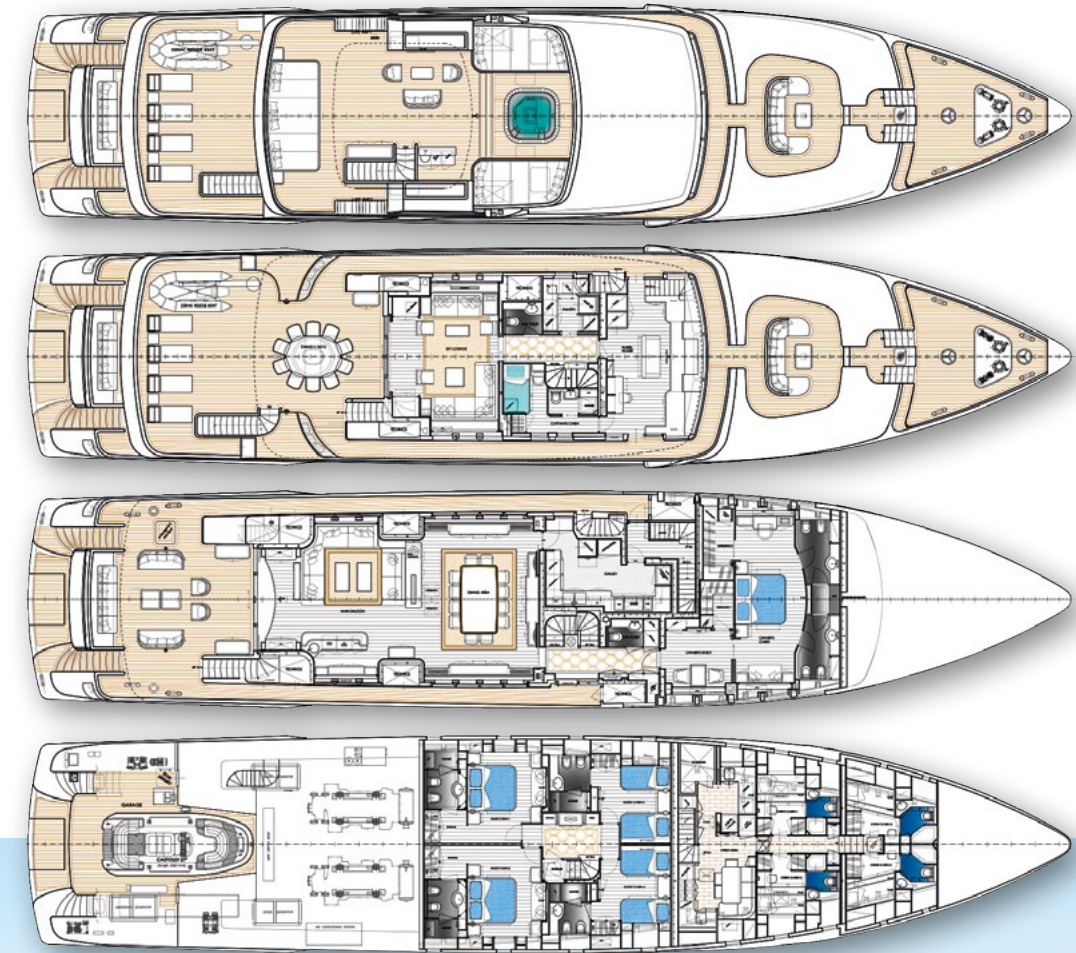


Prompt Delivery

# CODECASA 43 SERIE VINTAGE

by Eleonora Albini

Codecasa's Vintage Series has been attracting much international attention since its inception in 2011. This thanks to the ship's classic timeless lines blended with latest technology. The latest unit of this series which was launched in the course of last summer Construction C122 a 43 metre Full Beam is an opportunity that her fans should not miss.

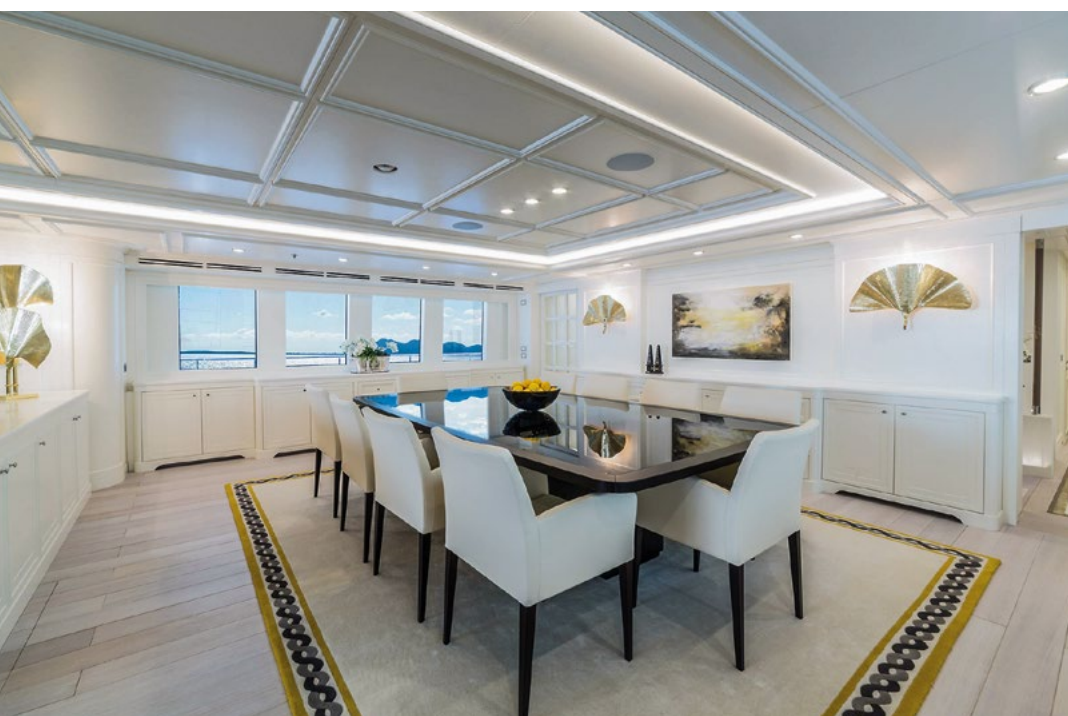


## TECHNICAL DATA

LOA: 43.00 m – Beam: 9.00 m – Draught: 2.60 m – Displacement fully laden: 440 tons – Top speed light displacement: 16.5 knots – Range at 11 knots: 4,000 nm – Fuel tank capacity: 65,000 litres – Water tank capacity: 14,000 litres – Engines: 2x 3512C Caterpillar (1,650 hp @ 1,800 rpm) – Stabilisers: CMC Marine Stabilis Electra SE160 – Gen. sets: 2 Caterpillar C4.4 Acert of 99 KW & 1 Caterpillar C4.4 Acert of 65 KW – Construction material: steel and aluminium superstructure – Guest cabins: 4 – Owner's: 1 – Crew cabins: 4 – Captain's: 1 – Class: Lloyd's Register EMEA 100 A1, SSC "Yacht" MONO G6 Malta Cross LMC/UMS/MCA LY3 Fully Compliant.







Construction C122 is the fifth of the Vintage Series, a yacht sporting a lovely steel hull with a weight saving aluminium alloy superstructure drawn up della Role architects with the yard's technical department.

The yacht sports three decks and a sundeck all specially designed and detailed to offer the sort of comfort, liveability and privacy for which Codecasa yachts are renowned. Their interiors offer welcoming and bright spaces filled with natural light where the decor is contemporary but not minimalist and the furniture which tends to be almost classic is flanked with matching oriental details.

The main deck sports a lovely stern cockpit area with made to measure teak and lacquered elements in metal grey colour, the same as the topsides and aluminium superstructure, which also takes the lion's share in different hues of the same colour throughout the interiors with some whites and diverse shades of yellow and ivory extended to fine

fabric and carpets creating an elegant play of geometric designs.

The main saloon/living area is situated forward of the stern cockpit. It is made up of a convivial area equipped with made to measure sofas, a bar and a dining area and table with a seating capacity for twelve. The choice of the interior decor where the white of the 'boiserie' is soberly eggshell and the

dish and cutlery container by Marioni and Poltrona Frau chairs contouring the table add lustre to the area where some of the fine fabric is by Chivasso, by Jab, by Jim Thompson and Robert Allen.

The main saloon's flooring is all in whitened oak which plays an important role in amplifying the perception of space and brightness. Back to back twin popup television screens lodge inside the dish and cutlery container so that entertainment, news and more can be viewed from the dining room area and also from the living/lounge area. The ship's galley is situated adjacent to the dining area. It is functional and comfortable to work in, it is fully equipped with Gaggenau and Miele appliances.

The foyer leading to the main deck features Calacatta marble flooring, Marfil cream colour, quartzite and honey onyx. It has been designed to resemble a carpet which leads to the owner's quarters. The same design is repeated in the foyers of the other two decks.

The owner's quarters are situated further forward where a comfortable study equipped with a desk, two small armchairs, a television set and Bcm LED lit library leads to a roomy well lit full beam master cabin which is furnished with a large bed at centre, a head board lined in Cloud skin by Penelopeoggi. The furniture's colours range from diverse hues of dove grey, ivory and gold, while fine fabrics and precious materials are principally from Dedar, Designers Guild, Harlequin, Christian Fishbaker, Larsen, Beacon Hill.

The bathroom sports twin wash basins, a shower unit placed almost amidships boasts a Calacatta marble floor and walls. The same material has been deployed for tops, the front of the wash basins and for the lids of the toilet bowls.

The guest quarters are situated along the lower deck they are made up of two large double cabins and two twins for a total of eight. A further two beds are available in two of the twin cabins. The cabins

## Codecasa 43 Serie Vintage





are well lit and the white of the woodwork and ceilings and of the whitened oak of the flooring blend harmoniously together. The guest bathrooms are lined in Rosewood coloured marble with quartzite inserts. The crew's quarters are situated along the same deck and are made up of four comfortable twin cabins.

The aft area of the upper deck hosts a spacious zone with sun beds and a dining table for 12. Inside there's a convivial small lounge decorated with bright colour schemes, a large popup television set. Then a pantry equipped with a dumbwaiter which connects to the galley. A small day head is situated further forward and to starboard there's the captain's cabin which accesses to the modern helm controls station with an external lounge area offering great privacy also while berthed alongside.

The sun deck above is also large and sports a Jacuzzi tub contoured by sun beds and pads, an area in which to relax with comfortable sofas, bar corner, television set. Aft of this there's another sun bathing area. In comparison to the other sister ships, the roll bar on this one makes this bridge more user friendly.

In true Codecasa tradition, this C122 guarantees great comfort and safety at sea in any weather, like every other yacht of the brand, thanks also to state of the art technology deployed on board.

With a pair of hefty 3512C Caterpillar engines capable of delivering 1,650 Hp at just 1,800 rpm the yacht's gross tonnage is still under 500 GT and can cruise at 11 knots for 4,000 nautical miles. In light displacement mode C122 is capable of reaching a top speed of 16.5 knots.

The yacht has been built according to Lloyd's Register to obtain Malta Cross 100 AI SSC, LMC UM Yacht, Mono G6 and is MCA LY3 (full compliance unrestricted).

For further information: Cantieri Navali Codecasa; Piazzale San Benedetto del Tronto - 55049 Viareggio (LU); tel. +39 0584 384092, fax +39 0584 384323; [www.codecasayachts.com](http://www.codecasayachts.com) - [info@codecasayachts.com](mailto:info@codecasayachts.com)

## Codecasa 43 Serie Vintage

