

# CODECASA M/Y LIBRA OMEGA

refits

## VINTAGE SERIES

by Eleonora Albini

Codecasa's Vintage Series was initially formalized at the start of the new production when this famed shipyard in Viareggio first presented the first model of the series at the opening day of the Monaco Yacht Show in 2011. This first model which is named M/Y Magari today collected much enthusiasm from all visiting international parties for its retro styling of times gone which perfectly recreated the same appreciative atmosphere of the period through a sincere desire for beauty, and for simplicity blended with the requirements imposed by modern cruising standards. A knowledgeable form of expression which stems from those that are fully aware of the past, for they possess a longstanding and consolidated tradition behind them but are also projected into the present with a host of state of the art technology and the latest available equipment. Libra Omega, twin sister ship to the very first one hit the water for the first time in 2013. Three years after the initial launching, the new owner decided to adapt the yacht to his own requirements with a brilliant re-fit, which left the yacht's layout and general plan unchanged but substituted furniture, fittings, interior decor; in a nutshell a complete re-styling was carried out to best meet the new owner's needs in harmony with the yacht's pre-existing appeal. Libra Omega sports three decks plus a sun deck while boasting ample space with two spacious living rooms, four large guest cabins along the lower deck and the owner's suite situated in the bow area of the main deck. The external spaces and technical areas are comfortably large, thereby confirming a great liveability which is a distinctive recurring feature of Codecasa yachts. The main saloon/indoor living area is accessed from the main deck which features a lounge area in



TECHNICAL DATA

LOA: 42.5 m – LWL: 42.20 m – Beam: 9.00 m – Draught: 2.60 m – Construction material: Steel hull and Aluminium alloy superstructure - Displacement fully laden: 430 tons – Top speed semi laden: 16.5 knots – Range: 4,000 nm at 11 knots – Fuel tank capacity: 75,000 litres



the stern sector furnished with synthetic rattan seats in which to relax and a teak table top with a stainless steel base. The whites and blues which have substituted the preceding cream brown and sandy coloured patterns immediately draw your attention and convey more apparent light and a sense of freshness to the interiors. A pair of navy blue sofas and newly substituted and comfortable white arm chairs greet you on entry. Around the varnished centrally placed coffee table, the woodwork of the boiserie stands stripped of its fabric but has been freshly varnished sporting lovely wood finishes. The carpeting, lighting and table lamps have all been substituted to match the saloon's new look which clearly recalls a marine atmosphere. The book shelves remain where they were as an ideal dividing line wanting to separate the living area from the dining one which has been furnished with a marble rectangular table which can seat twelve on new chairs with blue upholstery. The wood inlays along the bulkhead at one end of the dining room had to be modified to allow a magnificent antique painting to be installed. Chromed brass wall lights with Lumis fabric shades have substituted the preceding ones in fake skin while a large chandelier which was installed above the dining table has been substituted with a set of three spot lights which portray a sense of accrued lightness to the whole area. The owner's quarters which unfold in the bow section sport two bathrooms as well as a shower unit placed at centre while the bed's

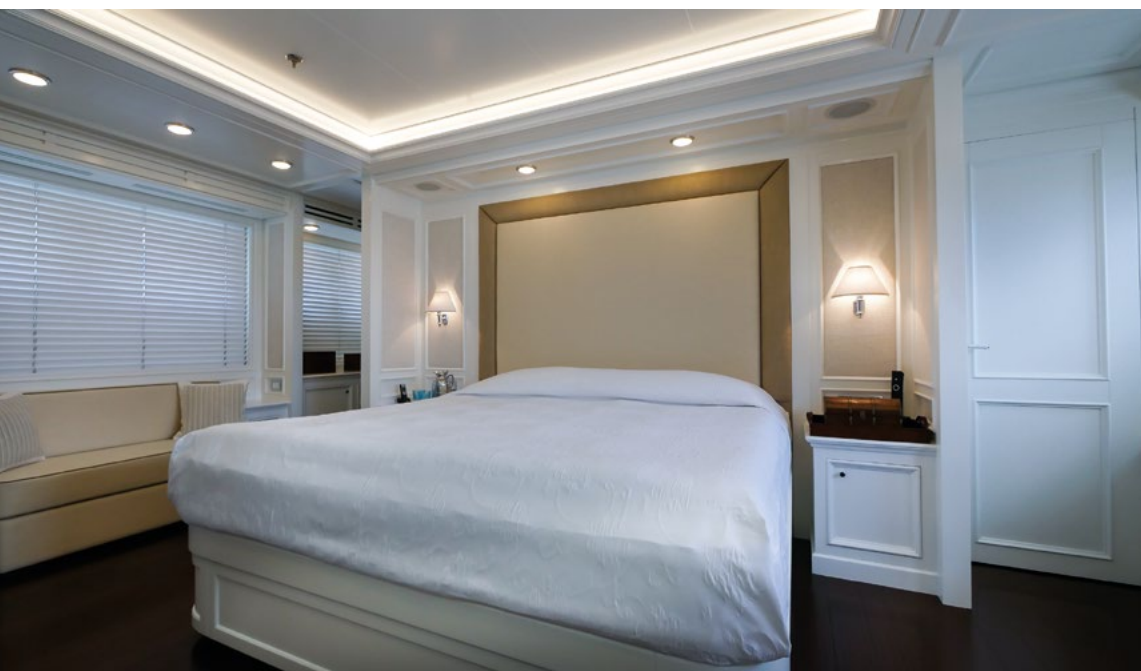
– Water tank capacity: 14,000 litres – Engines: 2 Caterpillar 3512C (1,230 KW/1,650 HP each at 1,800 rpm) – Guest cabins: 5 (1 master, 2 twins with foldaway beds, 2 doubles) – Crew cabins 4 (1 captain's cabin, 3 twins) – Shipyard: Cantieri Navali Codecasa – Exterior design: Cantieri Navali Codecasa – Interiors: Cantieri Navali Codecasa/Della Role - Class: Lloyd's Register Malta Cross 100 A1 SSC "Yacht" MONO G6 Malta Cross LMC - Full MCA Compliance.

# Codecasa M/Y Libra Omega

*Superyacht*

refits

## Vintage Series



headboard and several details concerning some of the upholstery and fabrics have been changed. No changes have been made to the flooring in the owner's and guest quarters which are made up with dark mahogany strips. The stern area of the bridge deck contains an external lightly furnished one with a block wood table and synthetic rattan chairs from which to enjoy 'al fresco' dinners. The former sun beds have given way to a large removable lacquered wooden frame like structure containing courtesy lighting which touches the deck so as to accommodate sponge sun pads. The sky lounge which is made up of two areas with L shaped sofas has yet to be upgraded to re-create a lost sense of continuity with what has become a new look for the interior decor where: carpets and cushions have been substituted in much the same way as picture paintings have and two soft bean bag chairs have gone to replace a pair of wooden coffee tables. Here too the bulkheads have been deprived of the fabric formerly covering them to reveal lovely well varnished woodwork. The wheelhouse situated beyond the pantry releases an elegant and sober atmosphere enhanced by fine joinery and wood essences remains equipped as before with the latest technology, a comfortable sofa lined with calf skins and large window like ports guaranteeing great visibility complete that picture. The guest's night quarters comprising two double cabins and two twins with foldaway beds, all with bathroom en

suite are situated along the lower deck have not been significantly modified only the bed spreads have been substituted. The stern end of this same deck sports a considerable engine room and hangar/ garage for the ship's tender, a Castoldi 21 LC. The bow area which is reserved for the crew is made up of three twins and the captain's cabin. Thanks to a pair of Caterpillar 3516C 1,650 HP engines the yacht is capable of reaching 16.5 knots and in terms of comfort underway Libra is very much in line with Codecasa's long established tradition. This yacht is safe in any weather and is capable of covering long hauls non-stop. M/Y Libra has maintained all of its solidity through time which characterizes the quality of the yard's builds. In the shipyard's main hangar situated near the quayside in Viareggio there's the fifth Vintage Series yacht being built. It is a 43M which has been scheduled to hit the water in the course of summer next.

For further information: Cantieri Navali Codecasa, Piazzale San Benedetto del Tronto 4, 55049 Viareggio (LU) tel. +39 0584 384092, [www.codecasayachts.com](http://www.codecasayachts.com) - [info@codecasayachts.com](mailto:info@codecasayachts.com)